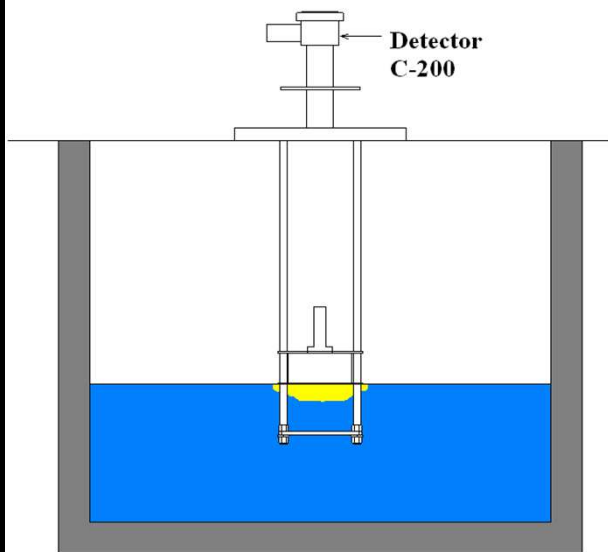


# Water Surface Oil Film Detector C-200

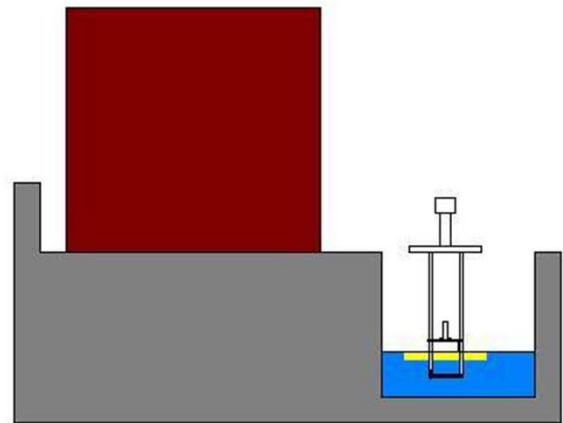
## Relay Output and Detect Oil Film on the Water.

- Stable and can be detected in liquid shake.
- The power supply, DC24V, AC110/220V, AC120/240V can also be produced.
- Changes in the capacitance detection electrode, and water to determine the oil film.
- Water level fluctuations, follows the detector was attached to the floater up and down.

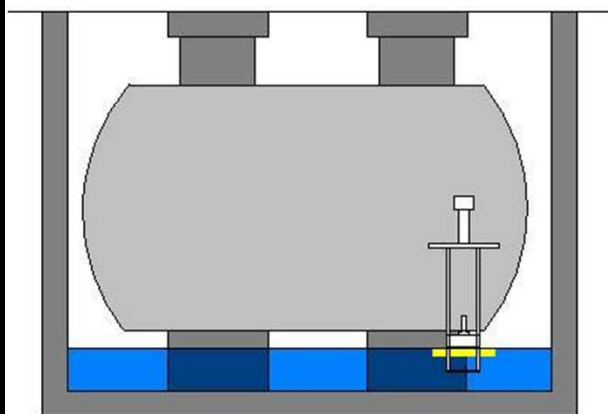
**[Applications 1] Drainage Pit**  
Pitt and rainwater drainage, and to detect oil slick pit of industrial wastewater can be avoided in advance



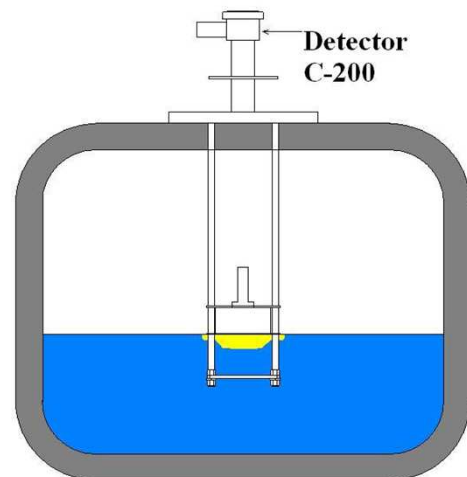
**[Applications 2] Tank Yard**  
The tank to detect the oil film, Can avoid violations of pollution regulations in advance. In addition, the fire prevention as well.



**[Applications 3] Underground Tank**  
The tank to detect the oil film, Can avoid violations of pollution. In addition, the fire prevention as well.



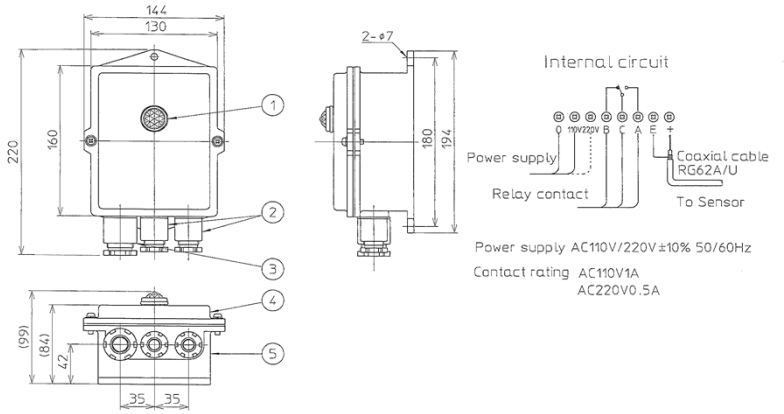
**[Applications 4] Boiler Drain Tank**  
The oil to prevent any contamination of water supplied to boilers.



**[Amplifier Specification]**

Type	C-200
Supply voltage	AC100~240V±10% 50/60Hz
Power consumption	2W
Ambient temperature	-10°C~55°C
Relay capacity	AC110 1A/220V 0.5A
External dimensions	W144 X H220 X D100
Material	Aluminum
Mass	2kg

**Amplifier**



**[Detector Specification]**

Ambient temperature	-10°C~55°C
Detection stroke	340mm
Mounting Flange	JIS10K-150AFF
Cable length	5m
External dimensions	Φ280 X L713
Material	SUS304
Mass	12kg

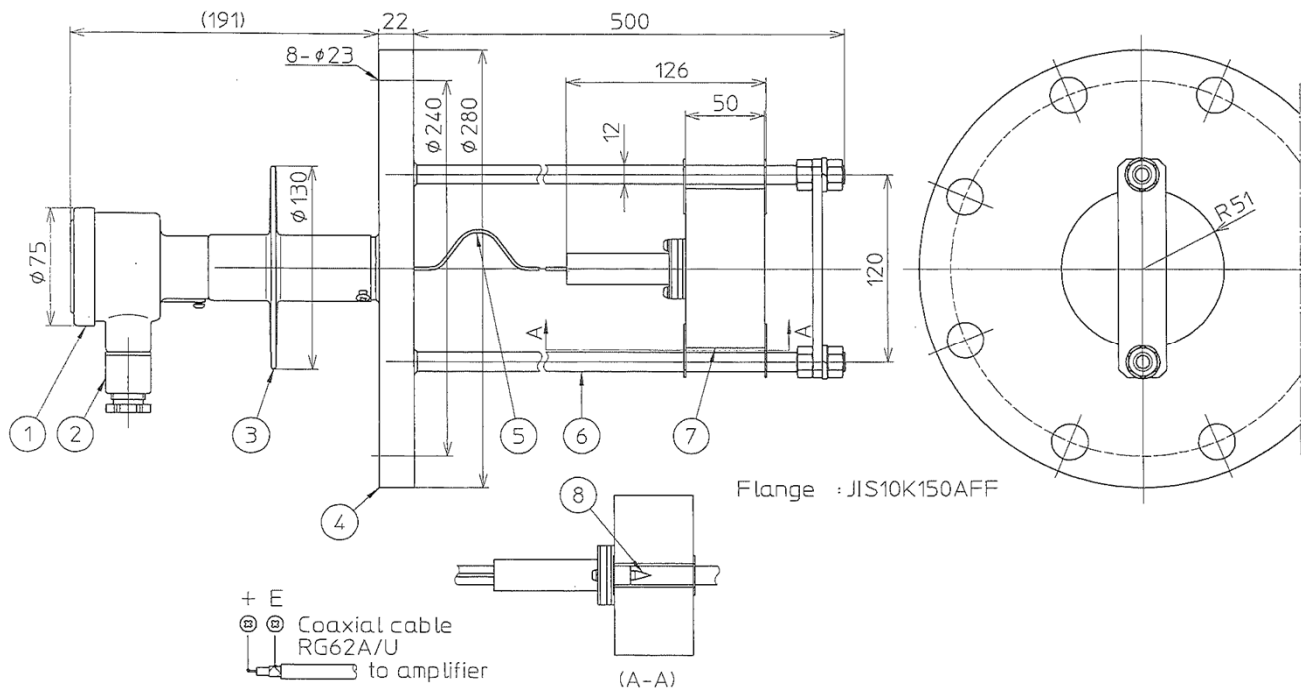
\* For liquids other than water, please contact us  
 \* Consider the case of explosion proof, please contact us.



**Detector**

**Mounting Flange**

**Amplifier**



**Heat-tech**

**Heat-tech Co., Ltd.**

<https://heater.heat-tech.biz/>

International Medical Device Alliance IMDA

1-6-5 Minatojima Minamimachi Chuoku Kobe 650-0047 Japan

TEL 81-78945-7894 FAX 81-78945-7895

E-mail info@heat-tech.biz